

DA partnered with Istation to develop this survey in March 2019, which asked school administrators around the country about the use of formative assessment by their teachers, and the challenges preventing more widespread adoption of a systematic approach to formative assessment in their districts.

Would you say that most teachers in your district use a **systematic approach to formative assessment** in their classrooms on a consistent basis?

74% Yes



26% No

Why not?

57% They haven't received adequate guidance or professional development about doing it effectively



48% They don't understand how to use assessment results to inform their teaching



43% They believe it takes too much time



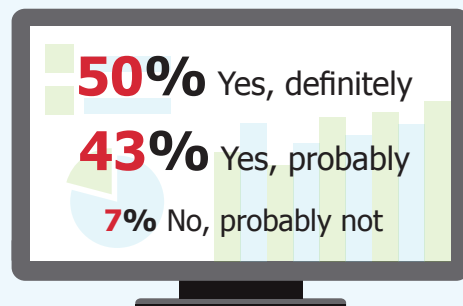
36% They don't have the tools that would make it easy to do this



14% They believe it's too difficult



Would it be helpful to your district to have a **digital formative assessment system** that could **accurately and objectively predict** individual student academic performance?

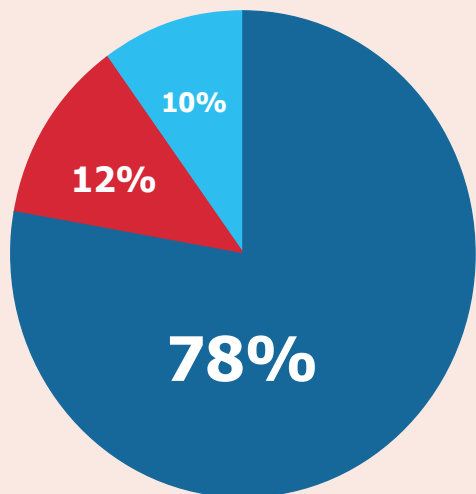


Do you believe that more teachers in your district would use a systematic approach to formative assessment consistently if it were **easier or less time consuming**?

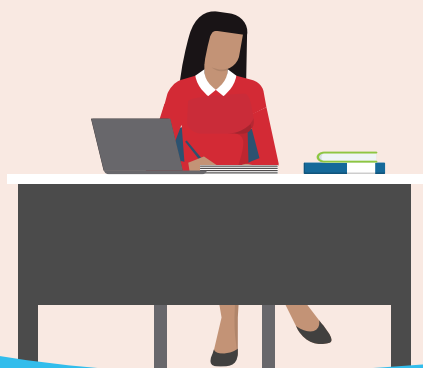
95% Yes, if it was easier, less time consuming, or both



Which is the most accurate statement describing **how** your teachers use **digital tools for formative assessment**?



- Our teachers use some digital tools for formative assessment, but they also use paper-based or manual methods
- Our teachers primarily use digital tools for formative assessment
- Most of our teachers rely entirely on paper-based or manual formative assessment methods, rather than digital tools



How would you describe the **implementation** of these digital tools?

54% Individual teachers use the digital tools they prefer



26% Digital tools for formative assessment are implemented on a districtwide basis

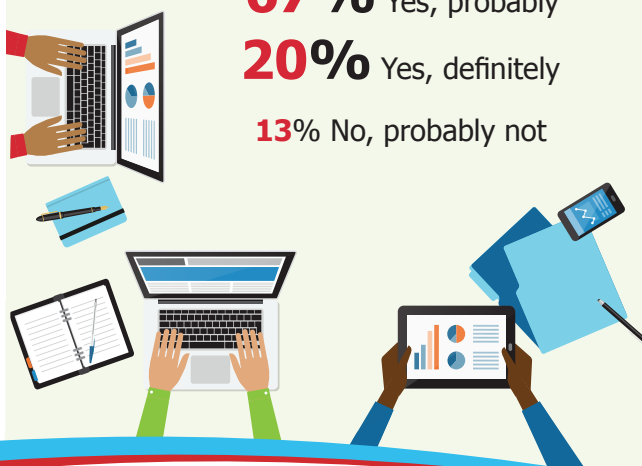


20% Digital tools for formative assessment are implemented on a schoolwide basis



Do you believe your teachers would **increase** their use of formative assessment if they had access to a **digital platform for doing it regularly and easily**?

67% Yes, probably
20% Yes, definitely
13% No, probably not



Istation provides digital formative assessments that use game-like activities to accurately measure student progress and predict future academic performance. Istation's assessments group students into tiers for intervention, make instructional recommendations and prescribe teacher-led lessons and digital resources, informing instruction and saving teachers time.

To learn more, visit info.istation.com/assessment

*Data taken from DA's subscriber study, "Formative Assessment Survey," March 2019, with 174 respondents.



Istation

DA District Administration